



# EnergySmart™ monitor user instructions

[britishgas.co.uk/energysmart](http://britishgas.co.uk/energysmart)

  
**British Gas**  
Looking after your world

# Your new EnergySmart™ monitor has arrived

It's a great way to learn how to use less electricity and save money, and just one of the ways British Gas helps you look after your world. Put your EnergySmart™ monitor somewhere easy to see to keep track of your electricity usage, and you'll soon start to see how simple changes like turning off the lights, or boiling less water in the kettle mean less electricity is being used.

For more energy saving tips and videos to help you get your EnergySmart™ monitor up and running, visit [britishgas.co.uk/monitor](http://britishgas.co.uk/monitor)

Remember, using less electricity means more money saved, and helps to reduce your home's carbon footprint too.



# Some important things you should know



It is important to observe some simple safety precautions when using this product. Safe operation of the monitor is compromised if used in a manner not specified by the manufacturer.



The EnergySmart™ monitor is easy to install, without the need for a qualified electrician. There is no need to open fuse boxes or to connect or disconnect any cabling. It is designed for internal use only.



When fitting the sensor, if the cables going into your electricity meter look perished (cracked, burned, or bare copper), loose, wet, or you have any doubts about their condition, do not install the sensor and contact a qualified electrician. Don't force the sensor onto the cable if the cable diameter appears to be too big.



Keep all components away from heat, flames, steam and extreme cold. Disconnect before cleaning and do not immerse in water or other liquids. Please contact British Gas if any components appear damaged or faulty. Our contact details appear at the back of this booklet.



Do not attempt to open, repair or service any part of the monitor yourself. If the monitor gets broken, take special care not to touch the liquid crystals in the screen.



To protect the environment, please recycle this product at the end of its life at your local recycling centre. You can find where that is at [recycle-more.co.uk](http://recycle-more.co.uk)



The Waste Electrical or Electronic Equipment (WEEE) directive means the UK has to collect and environmentally dispose of as many of these items as possible. We're committed to that programme and help to fund a national network of WEEE local authority recycling centres.

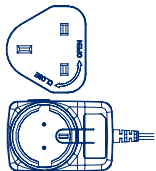


RoHS compliant. This product complies with RoHS regulations, ensuring that it contains acceptable levels of hazardous chemicals for home use.



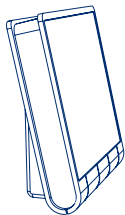
CE approved. This product has passed the appropriate quality assurance tests.

# In your box



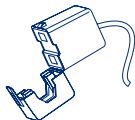
## Power supply

The power supply comes in two easy-to-assemble pieces. It powers the monitor directly from the mains.



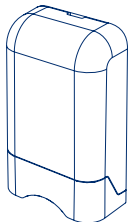
## Monitor

The monitor shows your energy use in real time. The monitor is mains powered.



## Sensor

The sensor clips around the mains electricity cable that comes into your meter to measure the energy you are using. Please read the safety notice in this booklet and fit the sensor according to the set up instructions in this guide.



## Transmitter

The transmitter sends the energy measured by the sensor wirelessly to the monitor.

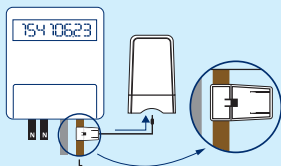
# 4 easy steps to install

## 1. Attach the sensor

Identify the live mains cable going into your electricity meter (it will be brown, red or have 'L' on it).

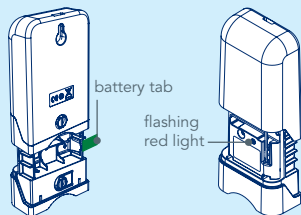
Clip the sensor around the mains live cable. You should hear a click to indicate the sensor has been tightly closed.

Plug in the other end of the sensor cable underneath the transmitter.



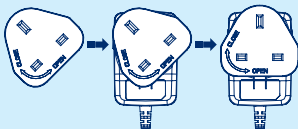
## 2. Activate the transmitter

Open the transmitter by pressing the button on the back and pulling the outer cover away. Remove the battery tab. The red light will flash to show the unit is working.



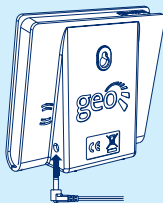
## 3. Assemble the power supply

Insert and twist clockwise to clip the pins to the power supply. You will hear a small click when the two lock correctly.



## 4. Plug it in

Put the plug into a mains socket and insert the black power cable into your monitor. The monitor will light up and ask you to enter the correct year, month, day and time. Use the ◀ and ▶ buttons to change values and the ○ button to save.



Now you are ready to start using your monitor. You may want to set the monitor for your particular tariff and budget, please see the frequently asked questions for help with this.

# Start using your EnergySmart™ monitor



## Signal strength

Shows the signal strength of the transmitter.

## Battery indicator

Flashes when the batteries in the transmitter are low.

## Speedometer

Shows your current rate of consumption in kW.

## Tariff

If you have more than one tariff for your electricity (i.e. Economy 7 customers) then the light bulb symbols will show you which tariff rate is being used.

## Temperature

Shows you the room temperature where your monitor is placed. The temperature is only shown after the monitor has been switched on for 30 minutes.

## Upper digits

Shows your current rate of consumption in cost, carbon or kW.

## Lower digits

Shows the total energy consumed or the budget for the chosen time period.

## Budget bar

Shows if you are predicted to be over or under your budget for the time period.

# Navigation and settings

## Left and right buttons

Use the ◀ and ▶ buttons to view different periods of use. You can see consumption for today, yesterday, this week, last week, this month and last month.

## Middle ○ button

To change units, press the ○ button to view the power and energy in cost, carbon or kW. Another press of the ○ button presents your budget for the selected time period on the lower digits.

## Settings

Enter the settings menu by pressing and holding the ○ button. Use the ◀ and ▶ buttons to navigate to the required setting and press the ○ button to confirm. When a setting flashes, it can be changed using the ◀ and ▶ buttons and saved by pressing the ○ button.

Setting	What does it mean?	What are the options?
<b>BUDGET</b>	Your budget is your monthly electricity expenditure (e.g. your direct debit amount) and is used by the budget bar.	The default is £30, please set this to your own expenditure.
<b>TARIFF</b>	You have one or more electricity tariffs that tell the monitor how to calculate costs.	The default is a single tariff of 12p. You can set up to three tariffs and a standing charge.
<b>DATE+TIME</b>	You can set your date and time.	You can change year, month, day and time.
<b>BACKLIGHT</b>	Your monitor is always on, but you can change when the monitor is lit up by its backlight.	By default, your backlight is always on but you can set the backlight to be timed.
<b>FINE-TUNE</b>	This is an advanced feature if you want to get more accurate energy measurements from your monitor.	See the fine-tune FAQ in this booklet.

# Frequently asked questions

## Where do I find my tariff information?

To help the electricity monitor do its job properly, you need to tell it how much you currently pay for your electricity. To do this you will need to enter your tariff information, which is the price you pay in pounds and pence per kilowatt hour.

Your electricity tariff information can be found by following these steps:

1. Log in to your online account .
2. Choose your energy, gas or electricity account by selecting the relevant 'manage account' link.
3. You will be able to view your tariff, just below your current balance.
4. If you click on the 'see unit rates' link, you will see all your tariff information, including the price you are paying and any cancellation charges, if appropriate.

## How do I set the tariff on my display?

In the settings menu select the TARIFF option. You can set up to three tariffs and a standing charge. Use the ◀ and ▶ buttons to change the tariff value and ○ button to save.

Most customers have a single unit rate (i.e. one tariff cost) and a standing charge. If you have an Economy 7 meter then you will need to add your second (night) tariff rate so that your monitor displays daily costs accurately. More detail about Economy 7 tariffs can be found in the help and advice section of our website.

Your monitor has the option for a 3rd tariff rate (however this is currently only a useful option for a very small number of customers).

## How do I set my consumption targets and budget?

In the monitor's settings menu, select the BUDGET option. You enter your monthly expenditure using the ◀ and ▶ buttons and ○ button to save.

You can use the online tools in your electricity account to help you understand your monthly energy usage and budget accordingly.

## How do I turn my display unit off and back on?

Unplug your display unit from the mains power. To turn it back on simply plug your display unit back into the mains power. Your display unit will store your settings, tariff information and historical energy data but you will be asked to set the correct date and time.

## How much energy does the display unit use and how much does it cost?

Your display uses around 600mW of electricity, which equates to less than £1 per year.



### **I have no signal bars or load and my display is flashing. What does this mean?**

This means that your display unit is not in range of your transmitter. The maximum range of the display unit is 30 meters and the signal can be detected through two walls. Try and situate your display unit closer to your transmitter.

Other reasons that the signal strength may be very weak or lost may be:

- Radio interference: This is unlikely in a home environment but if this does occur, try moving the display unit away from any possible source of interference and check there is no source of interference close to the sensor.
- The transmitter is located in a metal meter cabinet: the wireless connection between the transmitter and display unit can be impacted when travelling through metal.

### **How long is the transmitter battery life?**

The battery life is over two years. When the battery indicator starts to flash on your monitor's screen you can replace the three AA batteries in the transmitter.

### **How do I turn off my display at night?**

You can set the time when the display backlight is on or off. In the monitor's settings menu, select the BACKLIGHT option. Press the ◀ and ▶ buttons until TIMED is shown and then press the centre button to save. You can then enter the DISP OFF and DISP ON times. Note: Your display is always recording your consumption, even when the backlight is off.

### **Why does the display unit sometimes show a different reading to my utility bill?**

The electricity monitor provides a good indication of your approximate electricity consumption, but is not intended to measure consumption with 100% accuracy. Your electricity meter will continue to be used for billing purposes. However you can fine tune your monitor using an advanced feature.

### **Fine-Tuning your electricity monitor**

You can fine-tune your monitor to improve the accuracy of the energy consumption it presents. This is done using the "FINE TUNE" setting from the menu.

Follow these steps:

1. Make a note of your meter reading
2. Make a note of your usage presented by your monitor (i.e. THIS WEEK = 100 kWh)
3. After a period of time (e.g. a week, the longer the better) take your meter and display readings again
4. Calculate how many kWh you have used using the meter (i.e. meter reading 2 – meter reading 1)
5. Calculate how many kWh your display thinks you have used.
6. Calculate your fine tune setting, this is the ratio of "kWh recorded by the meter divided by kWh recorded by your display)
7. Enter this value in your monitor.

### **Why do I have a blank display unit?**

If after following the set up process nothing appears on your display unit at all, you may have a faulty component. Contact British Gas via email [energyefficiencyteam@britishgas.co.uk](mailto:energyefficiencyteam@britishgas.co.uk) or call us on **0800 048 0505**

If you have a faulty monitor, please return to:

British Gas EnergySmart™  
FREEPOST RSUS-BRYC-RRSR  
Unit 7  
Alexandria Drive  
OL7 0QN

Please include your full name and address.

### **I want to move the electricity monitor to another property, how do I erase data?**

Press and hold all three buttons on the monitor for 3 seconds.

You can install the monitor into your new house without needing to repair it, simply attach the sensor and transmitter to your new electricity meter and then power on the display.

### **How do I reset all the monitor data back to the original default settings?**

Press and hold all three buttons on the monitor for 3 seconds.

### **How do I re-pair the monitor with the transmitter?**

Monitors are automatically paired however if you are having pairing issues then you can manually re-pair the monitor and transmitter.

1. Press down the ◀ and ▶ buttons at the same time for 3 seconds
2. The screen will change to "paired"
3. Press and hold the ○ button to enter 'pairing mode'
4. Press the pair button on your transmitter
5. The monitor should then pair with the transmitter

### **When I first turn on my display, there is no temperature reported. Why?**

The temperature is only shown after the monitor has been switched on for 30 minutes.

# Contact information

If you have any questions on how to set up your EnergySmart™ monitor please go to [britishgas.co.uk/energysmart](http://britishgas.co.uk/energysmart) or contact us via email [energyefficiencyteam@britishgas.co.uk](mailto:energyefficiencyteam@britishgas.co.uk) or call us on **0800 048 0505**

If you have a faulty monitor, please return to:  
British Gas EnergySmart™  
FREEPOST RSUS-BRYC-RRSR  
Unit 7  
Alexandria Drive  
OL7 0QN

Please include your full name and address.

The British Gas EnergySmart™ monitor is designed and manufactured by [GreenEnergyOptions.co.uk](http://GreenEnergyOptions.co.uk) Ltd.

## **British Gas Trading Limited**

Registered in England & Wales:  
No 3078711. Millstream, Maidenhead Road, Windsor,  
Berkshire SL4 5GD. [britishgas.co.uk](http://britishgas.co.uk)

