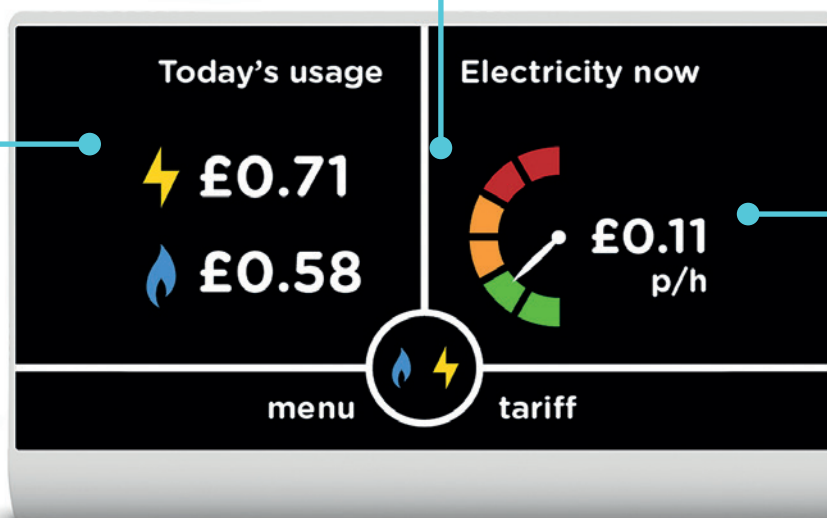


Your in-home display.

At a glance, you can see whether your electricity is high, medium or low, and how much it's costing.

See exactly how much energy you use in pounds and pence.



There are various settings, which allow you to view your energy usage by the hour, per week or per month.

Representative of a typical in-home display.

Your in-home display is a handheld device that can sit anywhere in your home.

In-home displays are designed to be simple and easy to use.

Whilst all in-home displays will provide the same information by law, they won't look the same as each energy supplier provides their own make.

Contact your energy supplier today about installing your smart meter.



Smart meter benefits.

Your smart meter communicates with your in-home display in the same way as other wireless systems, such as TVs. You do not need the internet for them to work.

- ✓ An in-home display allows you to see how much energy you are using as well as how much it's costing you in pounds and pence.
- ✓ Your smart meter and in-home display will automatically send meter readings to your energy supplier, so you will receive accurate, not estimated bills.
- ✓ Smart meters make it even easier to keep control of your energy.

If you're blind, partially sighted, have difficulties with dexterity or memory loss, contact your energy supplier to find out whether a more accessible in-home display is available.

Contact your energy supplier today about installing your smart meter.